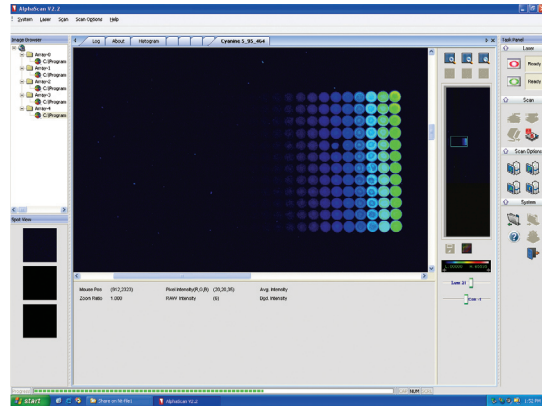


## Powerful Image Acquisition and Analysis Software



AlphaScan – Scan View Window

### Ease of Use

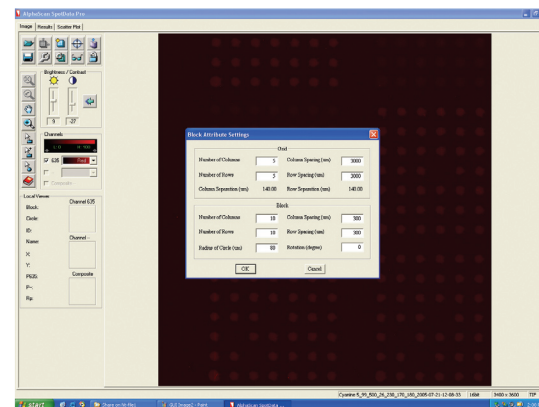
- Minimize the time required to scan an optimized image.
- Advanced software features allow the PMT settings to be changed using a dialog box.
- Enables users to acquire the optimal settings for image acquisition in a single prescan – avoiding multiple scans which can result in photobleaching.

### Fast Scan Set Up

- Quick Scan and Fine Scan features within the AlphaScan acquisition software allow a determination of the Microarray location.
- Fine Scan finds exact area and parameters – allows savings in scanning time.

### Integrated Acquisition and Analysis Software

- The complementary hardware and software design technology generates superior image quality, linear dynamic range, uniform and reproducible results.
- Automatic and manual grid alignment, spot detection, and background correction tools allow quick extraction of the most meaningful data.



SpotData Pro Image Analysis – Image Analysis Window

Specifications	AlphaScan
Resolution	User selectable: 5, 10, 20, 40µm
Sensitivity	0.1 fluors/µm <sup>2</sup>
Scan Speed	8mins/channel (resolution 10µm)
Scanning Mode	Sequential
Dynamic Range	up to 10 <sup>4</sup>
Repeatability	R <sup>2</sup> > 99%
Laser Power Settings	Continuously Adjustable
PMT Settings	Continuously Adjustable
Focus Search Range	±250µm
Excitation Wavelength	532nm and/or 635nm
Fluorescent Dyes	Cy3, Cy5 etc.,
Emission Wavelength	570±10nm, 675±10nm

## Contact and Ordering Information

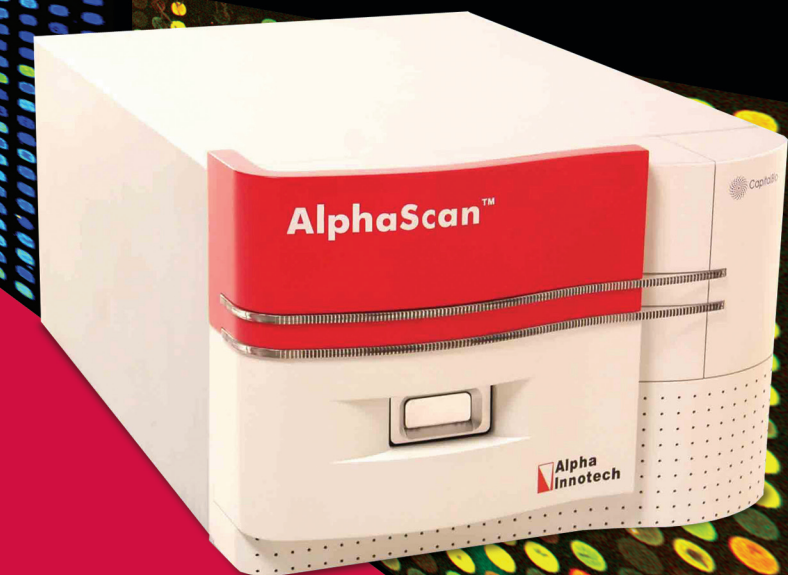
**Alpha Innotech Headquarters**  
2401 Merced Street  
San Leandro, California, 94577 USA

Phone: 510-483-9620  
Toll Free: 800-795-5556  
Fax: 510-483-3227

Email: [info@aicemail.com](mailto:info@aicemail.com)  
Website: [www.alphainnotech.com](http://www.alphainnotech.com)

# AlphaScan™

## High Performance Dual Laser Scanner for Slide Imaging



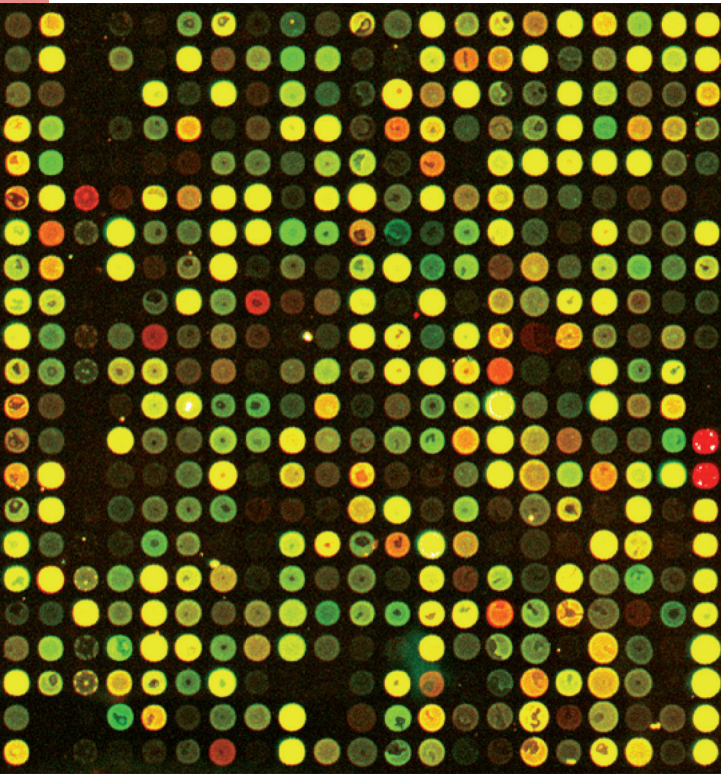
**Alpha Innotech**  
Innovations for Life Science Discovery

[www.Alphainnotech.com](http://www.Alphainnotech.com)  
800.795.5556

**Alpha Innotech**  
Innovations for Life Science Discovery

[www.Alphainnotech.com](http://www.Alphainnotech.com)

## An Ideal Platform for Microarray Analysis



### AlphaScan™ Offers

#### Flexibility

- Application Flexibility
- Substrate Flexibility
- Dye Flexibility

#### Superior Image Quality

Confocal Design provides superior image quality.

#### Alternative Slide Format

$\pm 250\mu\text{m}$  focus adjustment enables the use of various nonstandard format and thickness slides.

#### Adjustable Resolution

User selectable resolution allows scanning at different resolutions to meet varying scanning requirements.

### Application Flexibility

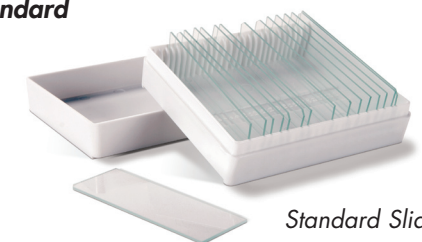
AlphaScan supports your Discovery, Research and Diagnostics needs for:

- DNA/SNPs
- CGH
- Gene Expression
- Protein Arrays
- Cell Arrays
- Tissue Arrays

### Sample Format Versatility

Alphascan is capable of reading a variety of sample formats and is designed to meet your different substrate needs.

*Focus search range of  $\pm 250\mu\text{m}$  allows the use of nonstandard substrates, enabling the use of a wide variety of slides. This unique feature of AlphaScan provides unparalleled flexibility allowing scanning of standard as well as custom slide arrays.*



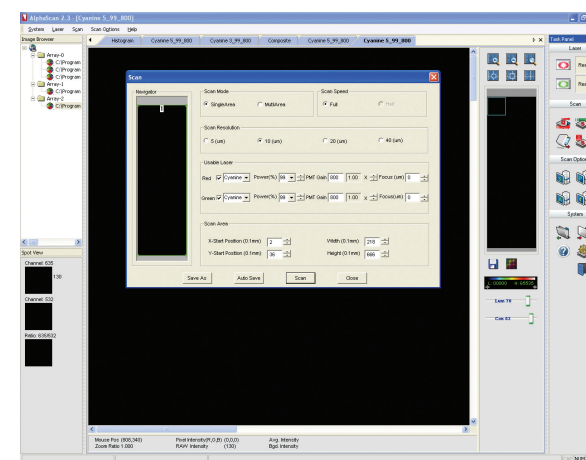
Standard Slides

### Repeatability

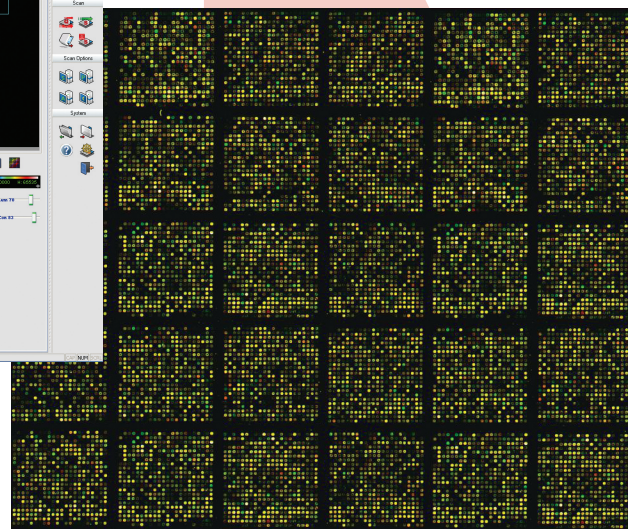
AlphaScan provides repeatable results. Data from multiple scans result in less than 5% coefficient of variation.

### Integrated Image Acquisition and Analysis Software

- The software and hardware controls make data acquisition a breeze.
- Preset hardware controls and intuitive software design allow users to efficiently acquire and analyze data.



AlphaScan – Scan Screen



### Confocal Optics

The Confocal design of AlphaScan provides enhanced quality images. The confocal properties of AlphaScan optics improve the image quality by decreasing image artifacts and lowering background levels.

### Precise Laser Power Settings

AlphaScan features continuously adjustable laser power settings that can be changed in 1% increments, allowing flexibility and precision in data analysis.

### Dye Flexibility

AlphaScan lasers excite at 532 nm and at 635 nm. AlphaScan is optimized for Cy3 and Cy5 dyes and is compatible with other dyes that have spectra similar to Cy3 and Cy5.